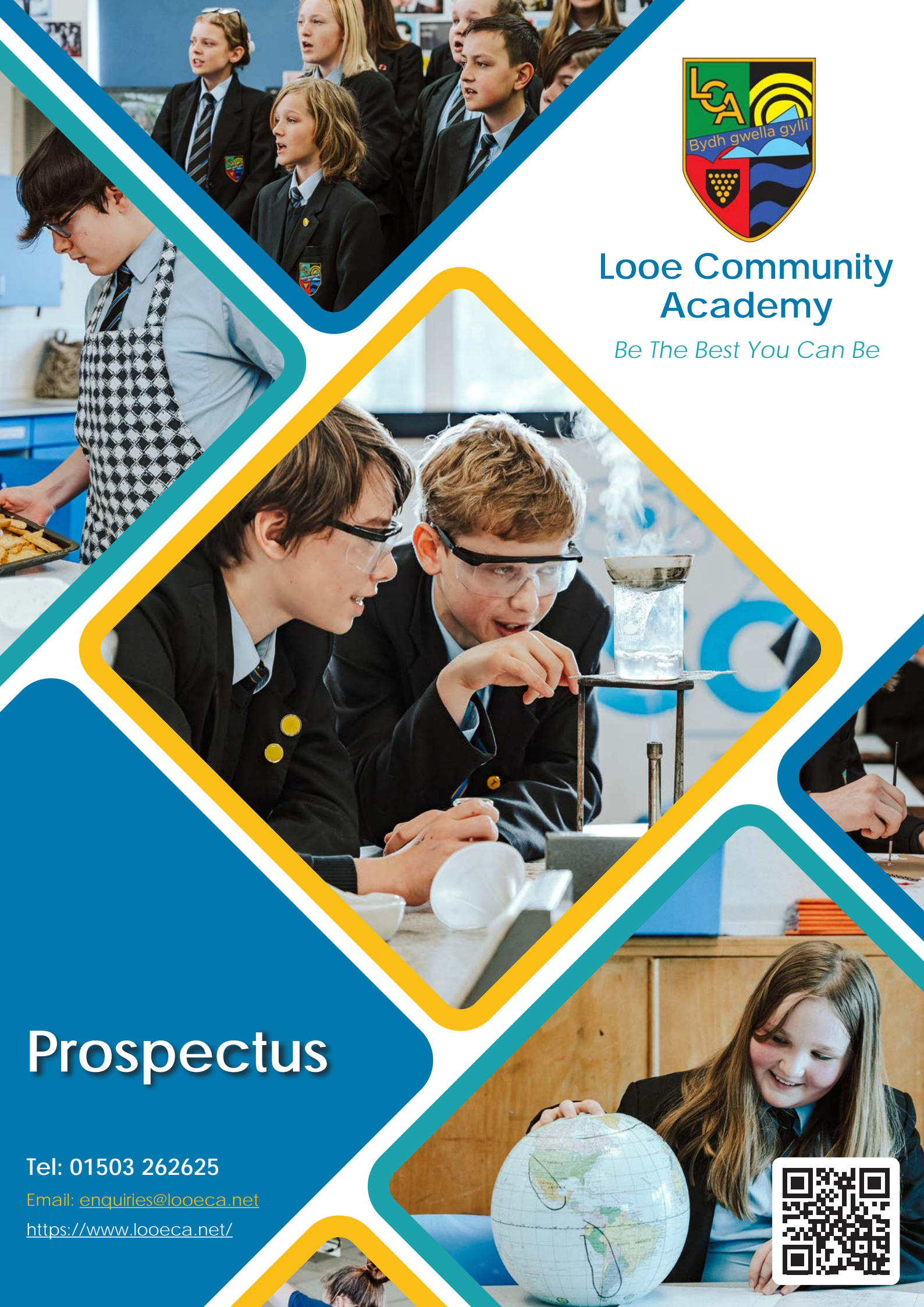




# Looe Community Academy

*Be The Best You Can Be*

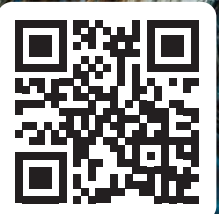


# Prospectus

Tel: 01503 262625

Email: [enquiries@looea.net](mailto:enquiries@looea.net)

<https://www.looea.net/>



# Our Mission...

*...to create and sustain a caring, learning community of high quality, where everyone is valued for who they are and for what they become*

## A Warm Welcome Awaits

It gives me much pleasure to welcome you to our prospectus, which provides an initial insight in to the way we work, answers some of your questions and helps you understand the values and principles that guide us.

Looe Community Academy is a friendly, caring school that sets and expects high standards of achievement, effort and behaviour from all students. We are a very successful community school that consistently adds value, as we strive for students to be the best they can be.

We believe a student's journey through their schooling is as important as the formal qualifications they achieve. To this end, we work in partnership to provide students with a safe, purposeful learning environment, where good relationships and responsibility to others are nurtured.

It is our belief that students should be actively involved in the life of the Academy and its community to encourage positive and appropriate development of their abilities, characters and personalities. Our values champion and recognise respectful, responsible and resilient learners.

Our strong Performing Arts ethos promotes participation at many levels across the Academy and the community. It provides opportunities for building confidence, team work, commitment, performance and fun.

I feel it is best to let our Academy speak for itself, so we look forward to meeting you on our journey to being an outstanding academy and invite you to join our vibrant and successful community.

**Scott Yalden**  
Headteacher





## Admissions

Parents/Carers of students transferring from Year 6 to Year 7 receive the "Transfer to Secondary School" guide from their primary school in September, which informs them of their designated secondary school and admissions procedure.

They are invited to apply for their first, second and third preference school. When oversubscribed the Academy follows the over subscription criteria published in our policy. Failure to apply online or to return the form by the deadline could result in places being filled through the high demand from students living outside the designated area who do express a preference. Full information can be found at [www.cornwall.gov.uk/admissions](http://www.cornwall.gov.uk/admissions).

At any other time, please contact us and if the year group has a place available, parents will be invited to tour the Academy and discuss arrangements. You will have the right to appeal if your application is not successful.

## Transition From Primary School

We recognise just how important it is to make a positive start, so we have an engaging programme to ensure a smooth transition:

- We invite all prospective parents, carers and children to attend a tour should they wish to see the Academy during the day
- We make a range of resources including videos available online for students to find out more about what being at the Academy would be like
- Through liaison with our primary schools, students in Years 5 and 6 have opportunities to participate in learning activities, performing arts and sports
- Our skilled pastoral staff visit all prospective students in the summer term prior to transfer, this is held virtually if it is not possible to attend due to the pandemic
- Induction days are held for Year 6 students to familiarise themselves with the Academy environment and to meet their tutors prior to their official start
- A parents' evening provides an opportunity for parents to meet tutors and senior staff in the autumn term
- Close links with primary schools ensure that we can meet the needs of each learner

# Working in Partnership

We strongly and actively encourage partnership between home and school; it is essential to every student's welfare and progress.

The form tutor is at the heart of the care we provide. This key person takes the responsibility of every child in their group and is the link between student, Academy and parent. They help students to make the most of Academy life by monitoring progress and helping students overcome any problems that may arise.

## Timings of the Academy Day

**08:00** – Gates open to students. Students able to access Breakfast Club

**08:40** – Student Roll Call, leading on to morning registration

**08:45** – Assembly, reading, reflection, activities

**09:15** – Period 1

**10:15** – Period 2

**11:15** – Break

**11:35** – Period 3

**12:35** – Period 4

**13:35** – Lunch / Lunchtime clubs

**14:10** – Period 5

**15:10** – Student day ends

**15:15** – Homework club and extra-curricular activities commence

**16:30** – All students off site

## Our Students Say...

*...I like our Academy because it is really sweet and small and everyone is really friendly and welcoming*





# Helping Children Achieve More

The Academy is committed to inclusive education. Our primary aim is to ensure that all students are supported and challenged to achieve their full potential and grow up to lead safe, happy, healthy and successful lives. We expect high standards of behaviour, thereby ensuring a safe learning environment.

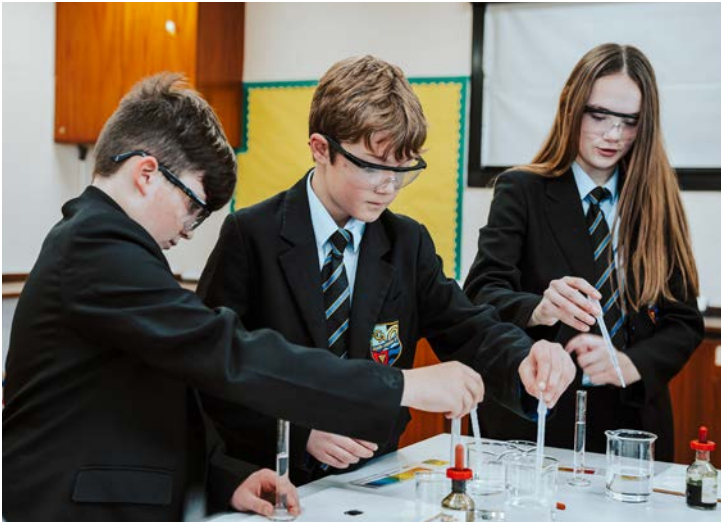
Bullying of any kind is unacceptable and if it does arise we seek to deal with it promptly. Students are encouraged to tell a responsible person and to support each other. Our behaviour policy details expectations, rewards and sanctions operating within the Academy. Full details of this policy, and others, can be obtained from the school website: <https://www.looea.net/>

Students are encouraged to take responsibility for themselves and others; we have a prefect system, encourage active citizenship, fund-raising, peer mentoring and a range of leadership opportunities, including "lead learners" that actively support other students.

# Our Commitment to Excellence is...



*...our learning contract between student, home and Academy*



# Communication

The tutor is the first point of contact for concerns or enquiries. There will always be someone you can talk to about any concerns you may have or information you may need. Come in and see us, telephone during normal school hours or use our dedicated email address: [enquiries@looeca.net](mailto:enquiries@looeca.net). Alternatively, staff or governors may be contacted. Meetings can normally be arranged quickly and at everyone's convenience. Our Pastoral Care Officers are also available to help you and can provide swift and easy access to support services outside of school.

Communication between students, teachers and home is enhanced through the use of the Satchel One App.

- Helping students record and monitor homework and independent study assignments
- Organise time
- Records achievements and attendance
- Records any behavioural concerns

The Academy website is updated with recent news and letters. We welcome feedback on how we can improve things further and value our consultations with parents. The enthusiastic student council, elected each year, ensures our students play an active part. We provide opportunities for informative educational activities, including fund-raising events, shows, exhibitions, information evenings and presentations.

## Our Academy Motto is...

... *'Bydh gwella gylli'*, which translates from Cornish to  
*'Be the best you can be'*





# Our Curriculum

## Key Stage 3: Year 7, 8 and 9

All students are entitled to a broad and balanced curriculum and follow courses which fully cover the requirements of the National Curriculum.

These courses are taught by specialist staff and students experience up to 18 courses each year.

In English, Maths and Science, students are grouped according to ability after the careful consideration of primary records, Key Stage 2 SAT examinations, language selection and teacher assessments. Movement between classes is possible throughout the year and through each Key Stage based on a continuous internal review of academic progress.

Students are allocated to either French or Spanish on entry.

Most other subjects are taught in mixed ability classes.

## Key Stage 4: Year 10 and 11

In Years 10 and 11, students are able to choose some of their courses from modern foreign languages, humanities, arts, technology or vocational options. These lead to GCSE or vocational qualifications at Level 1 or 2. Students have four options of courses in total and leave with 10 GCSEs or equivalent. We also offer triple science using twilight classes.

Our comprehensive careers information, advice and guidance programme ensures all students are briefed on developments in 14-19 education and post-16 opportunities. All students in Year 7 to 11 participate in a comprehensive careers programme to develop their understanding of the world of work and entrepreneurship. Year 10 undertake a week of work experience in the community.

Students in the top 5% of the ability range are identified through a MidYis test, teacher assessments and placed on a gifted and talented register. Those who show a particular talent in sport or the arts are also included.



# Homework and Independent Learning

This is essential to successful study and is set regularly for all students to:

- Encourage independent study and self-discipline
- Practise skills learnt in class
- Extend areas of study
- Involve parents and carers in their child's learning

The development of our online learning environment gives students and parents/carers access to resources and assignments from home.

## Assessment

Regular assessment of students' progress takes place throughout the year and is reported to parents via three academic reports a year, form tutor consultations and a subject-focused evening.

During Key Stage 4, students are entered for a full range of GCSE examinations and vocational qualifications. Some students will take one-year GCSE courses, externally examined at the end of Year 10 or Year 11. Careful monitoring and preparation for these exams takes place and parents are informed throughout the process and we provide a range of revision techniques so they can support students. Students may be assigned a mentor to support them in their work and to encourage their progress towards personal targets.

## PSHCE

PSHCE (personal, social, health and citizenship and economics education) is a course for all students. The programme includes group work, discussion, debate, visiting speakers, practical exercises and ICT. Students are challenged to develop opinions, explore values and beliefs, to discuss topical ethical issues and ultimately to make informed decisions, now and in the future. Topics include sex and relationships, mental and physical health, drugs and health issues, careers, work related learning, rights and responsibilities, law and order, political understanding, economic well-being and financial capability, preparing for work and global issues.

PSHCE is taught by tutors and by specialist visiting speakers who include Amnesty International, the Prison Service, local police, Brook, local Magistrates, drug and alcohol agencies and careers services on our PSHCE focus days. Relationships, health and sex education are now a statutory part of the curriculum. Parents/carers can withdraw their child from sex education lessons if they wish, except for elements of the National Curriculum science programme such as reproduction and content deemed statutory by the government.



# English

The English department nurtures language skills and a love of literature in an atmosphere of enjoyment and shared learning, which has led to fantastic exam results. Students learn to express themselves creatively and imaginatively and to communicate with others confidently and effectively. They are regularly assessed and intervention programmes are used to enable all students to reach their potential.

At Key Stage 4 all students study both English Language and English Literature GCSEs. Students are encouraged to access extra-curricular activities such as creative writing competitions, book clubs, theatre visits, GCSE revision classes and public speaking competitions.

We believe that students who become articulate speakers and confident readers and writers will be ready to face the demands of further education and the world of work.

## Our Students Say...



*...we learn, but at the same time it's fun*

*...I like our school because we get to learn more stuff every day*

*...this school is amazing - move to Looe!*



## Maths

Maths is more than number skills.

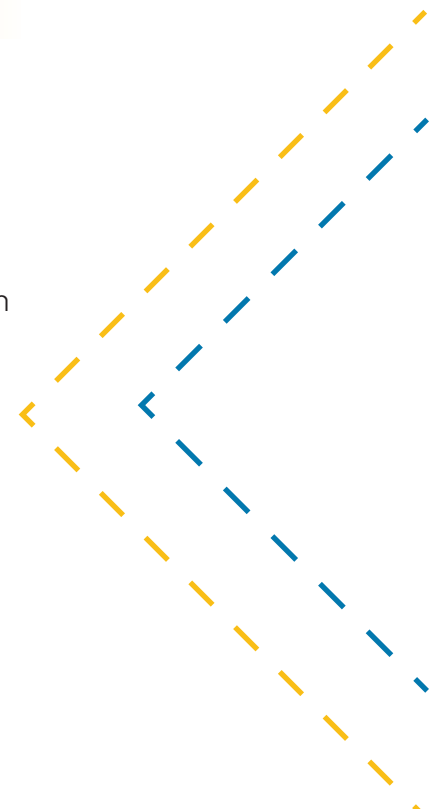
It involves logical thinking, problem solving skills and practical knowledge to prepare students to deal with the variety of data which is a constant feature of modern life.

We design courses to stimulate motivation and maximise progress.

We are committed to providing a range of experiences including problem solving and reasoning, covering all areas of maths, which provide opportunities to demonstrate skills in a variety of situations.

Maths is delivered with enthusiasm and expertise.

At Key Stage 3, students follow a course in readiness for the maths GCSE which will be examined in Year 10 or 11.



# Sport and PE

Physical Education and school sport play an important part in providing opportunities to aid the physical, mental, social and emotional well-being of all students. Students' physical literacy is developed through fun and challenging lessons allowing countless experiences to further enhance positive learner characteristics to support their academic journey. Our Sport Education model challenges students to adopt numerous roles within their PE lessons to show their knowledge, understanding and ability across all aspects of sport and physical activity. Sport makes a valuable contribution to the general ethos of the Academy through the numerous representational and extracurricular opportunities including inter-house sports, fixtures, county sports and national competitions. Our excellent facilities include a sports hall, all-weather multi-use games area, netball/tennis courts and extensive playing fields and we also use specialist local facilities. This enables us to focus on a variety of sports in lessons, catering for a wide variety of needs and interests, whilst also providing numerous extra-curricular opportunities. We also offer leadership opportunities for our students and at KS4 we offer GCSE PE, enabling more in-depth knowledge and understanding of this subject to be achieved whilst enhancing their practical capabilities at the highest level. We are very proud of our commitment to this subject area and our results are consistently excellent. The importance of a healthy active lifestyle is promoted throughout all aspects of PE and integrated into all lessons across KS3 and KS4 culminating in our annual Health & Well-being day, enabling students to take part in a huge amount of sessions focussed on benefiting and developing well-being and mindfulness. It is hoped all students will be able to take as many positive aspects from this subject and positively integrate them into all aspects of their education and future lives.



## Our Students Say...



*...ours is a very good school; the school is small but that is good because you can get the help you need*



*...this school helps children through tough times and helps us learn new things every day and the teachers make so much effort to help people*



## The Arts and Performance

The Academy has a thriving Performance faculty. We believe that performance and creativity can be a catalyst for learning and that the arts can offer a unique opportunity to unlock the potential of every individual.

The Academy has an excellent reputation for its work in Drama, which is very popular with students. The emphasis is placed on developing students who are confident and creative individuals and a variety of skills, genres and techniques are explored. The department organises productions each year that unite the talent and energy from all areas of the Academy and our wider community.

Music is an extremely popular subject within the school that enjoys excellent results each year. Music lessons at Looe offer a diverse curriculum ranging from rock to pop, and from beat-boxing to African drumming! Many students learn an instrument and there are frequent opportunities for both Academy and community performances. These stem from the curriculum and also from the many extra-curricular activities, clubs and performances that are available to students.

Dance offers many opportunities to our students within the curriculum, including exploring various dance styles in both practical and analytical ways, being part of a cast during productions, visiting local theatres, having workshops with professional dance artists and engaging in performance and choreographic work. All students in key stage 3 will study Dance with the option of taking it at key stage 4.

Within Art, students work with a variety of media, both 2D and 3D. They are able to let their creativity grow and produce work to the best of their ability, which translates in to consistently fantastic results. They have the opportunity to work with local artists and visit galleries, participate in competitions and in community projects. The exceptional level of motivation and enthusiasm for the subject is reflected in their work, with many works being displayed proudly around the Academy, and in local galleries.

# Global Studies

## Modern Foreign Languages

The study of a foreign language can open a window on the world, broadening horizons, raising aspirations, breaking down barriers and creating understanding and appreciation of different cultures and ways of life.

We live in a multi-lingual society and our reliance on international trade means that the need for language skills permeates all professions at all levels. Here at LCA teaching of **French** and **Spanish** is creative, interactive and inclusive. The themes covered are relevant and engaging and build towards the GCSE: Identity and culture; Local area, holiday and travel; School; Future aspirations, study and work; International and global dimension. Alongside the study of grammar and key vocabulary, a variety of approaches and resources, including film, poetry, song, mime, role-play and phonics are used to address the different needs and learning styles of students and to enhance the learning experience.

## Humanities

Students at the Academy enjoy the opportunity to study individual subjects in Humanities of Religion and World Views, Geography and History.

Geography enables students to improve their understanding of people and the planet, exploring the world in terms of what it does, where, when, how and why. Students learn in a variety of ways, are encouraged to think creatively and work in their preferred learning styles on varied challenges.

Use of Geographic Information Systems, debates, current news related topics and of course fieldwork, help stimulate interest and curiosity. Sustainable development is a central theme, exploring how we, as citizens of the planet, live in different ways that can either hinder or help all our futures.

Religion and World Views is taught in accordance with the aims and content of the Cornwall agreed syllabus. Students enjoy a balanced programme based on themes that cover aspects of Christianity, Buddhism and Islam, along with a range of ethical and philosophical issues that are explored. We help students to enhance their spiritual, moral, social and cultural development. Students begin their GCSE in Year 9, studying issues related to religion, life and society. Students study these from a Christian, Buddhist and personal point of view. They attend assemblies that reflect the broadly Christian character and tradition of the local community. As Religion and World Views and assembly are provided in a non-denominational way, it is hoped parents will allow students to participate, although parents have the right to withdraw students from both, with any request in writing to the Headteacher.

History at Key Stage 3 covers the Medieval, Tudor and Stuart eras through to the Victorians and the 20th century. Thinking skills, meta-cognition, storytelling, source analysis, solving mysteries and challenging interpretations all form part of the learning experience, along with creative expression such as product manufacture and drama. Through creativity we bring the past to life. Students re-enact themes and scenes from history as well as creating freeze-frames and other performance related skills. GCSE students develop a wider range of historical skills, with exciting courses on offer. Medicine Through Time is a firm favourite along with Weimar and Nazi Germany, with the course supplemented by studies of Anglo-Saxon and Norman England and the American West.

# Science

The science of today is the technology of tomorrow and we passionately believe that science has something to offer every student. Science has changed our lives and is vital in understanding our past and shaping our future. Our students study the AQA Trilogy combined science GCSE, which provides the foundation for understanding the world around them through the disciplines of biology, chemistry and physics. During their five-year journey, students build on learning from Key Stage 1 and 2 while developing three key areas:

- Knowledge and understanding of the key scientific ideas, techniques and procedures;
- Application of knowledge and understanding to new contexts;
- Analysis of information and ideas, including interpretation, evaluation, making judgments, drawing conclusions and developing experimental procedures.

During Year 9, students have the opportunity to challenge themselves by embarking on the demanding Separate Science GCSE route which will provide them with three separate GCSEs rather than a combined award, which is equivalent to two GCSEs.

Our team of dedicated science staff deliver exciting and engaging teaching and learning. There is no better way to learn about science than through purposeful practical activities, so our science department is well equipped with purpose built laboratories. In addition to the delivery of the science curriculum, we look for every opportunity to enrich the learning.

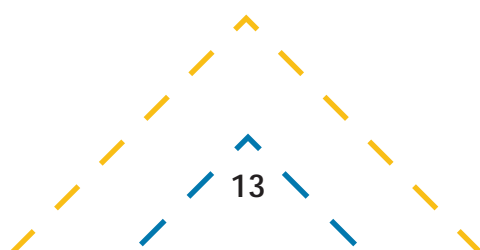
## Design, Technology and ICT

The Design and Technology department includes the teaching of all design and technology areas, engineering, food, textiles, and computer science and has specialist classrooms for all these subjects. Students undertake projects that are designed to reflect the world of industry and experience a range of skills, techniques and materials that will be of use in the workplace, further education and in life generally.

In all aspects of these subjects we want our students to be creative thinkers, show individuality and to think 'out of the box'. Students are introduced to the work of creative practitioners and local and famous designers and inventors, are asked to consider sustainability in their approach, and to face problem solving with tenacity and determination, using their knowledge and skills to create high quality solutions that function well or taste good! At Key Stage 4, Art – Textiles, D.T. Hospitality and Catering, Computer Science and Engineering are offered at GCSE level and trips or visits encouraged as appropriate.

Computer Science is a well-established and successful subject. The course looks at the structure of computer programming and the design of computer languages in developing websites and applications. There are also units of work that teach individuals to use common business applications.

E-safety principles instilled to ensure that individuals have knowledge safe technological practice.



# Special Educational Needs, Disability and Inclusion

This department is staffed and equipped to support any of our students with a specific learning, emotional or medical need. A variety of approaches within and beyond the classroom ensure all students access the full curriculum within our inclusive ethos.

Our buildings have been adapted for those with impaired mobility and a review of their needs is established on entry and kept under review. Our team works closely with academic and pastoral staff, parents and students to identify, assess and monitor procedures in line with the Code of Practice.

Students are supported through a whole school approach and provision is flexible enough to respond to the notion that any student, at any time, for any length of time may have an additional learning need.

We have access to further specialist services who we can involve with parental agreement and we work closely with other agencies within Cornwall. If any parent has a specific concern, please contact us so we can access the appropriate support.



## Our Students Say...



*...Challenge Week was such an amazing experience and I would love to relive every minute*



*...it was really fun and an amazing experience;  
I would definitely go back to the Isles of Scilly again*

*...it was really fun and it gives you a chance to  
do something that may be outside of your comfort zone*



## Extra-Curricular Activities

Our Academy prides itself on its wide range of activities beyond the classroom that foster a sense of belonging, achievement, and aspiration.

There is a busy lunchtime itinerary of activities and clubs and a vibrant after-school provision - there's something for everyone - sport, dance, drama, art, music, technology, homework club, revision study groups and much more.

Our well-established Challenge Week provides unique educational experiences, enriching and enhancing the curriculum and providing opportunities for students to broaden their horizons at home and abroad.

## Our Students Say...

*...you learn stuff, getting you a dream job*

*...the good thing about our school is that it pushes for excellence*

*...Looe is a place where students can learn safely*

*...I like this school because all the teachers are really nice*

Reception

Looe  
Community Academy



## Looe Community Academy

Headteacher - Scott Yalden

Address:

Sunrising, East Looe,  
Cornwall PL13 1NQ

Tel. 01503 262625

Email: [enquiries@looeca.net](mailto:enquiries@looeca.net)

Website: [www.looeca.net](http://www.looeca.net)



Looe Community Academy, Sunrising, East Looe, PL13 1NQ -  
A member of SMART (South East Cornwall Multi Academy Regional  
Trust), an exempt charity and a company limited by guarantee,  
registered in England and Wales with company number 7542166

SMART's registered office is at Liskeard School and Community  
College, Luxstowe, Liskeard, Cornwall PL14 3EA